

What's New in HxGN EAM Version 12.1



From enhanced data integration to streamlined workflows and mobile innovations, the latest HxGN EAM release empowers users with more efficient operations, better decision-making and enhanced overall productivity.



Release Highlights

HxGN EAM version 12.1's new features, industry-specific capabilities and customer-led enhancements adds to the solution's existing desktop and mobile functionalities. This update includes highly requested features such as approval workflows, dynamic checklists and document enhancements.

One of the biggest advancements in HxGN EAM version 12.1 is the release of HxGN EAM Databridge Pro, a new middleware and integration broker module. Representing Hexagon's next enterprise asset management technology evolution, it offers robust capabilities for data transformation, integration, configuration, endpoint management and message journey visibility.

To view the complete list of changes in the HxGN EAM version 12.1 release, please read the [12.1 Release Notes](#) and [12.1 Mobile Release Notes](#).



HxGN EAM Databridge Pro

Effortless data integration for streamlined data pipelines, real-time insights and complete control in one solution.



Approval Workflows

Embedded visual workflow approval capability to manage work orders, case management, requisitions and purchase orders.



Dynamic Checklists

Checklist items that only appear when another checklist item is answered with a specific value.



Document Enhancements

Lock documents, view their version history and preview a document on the record view.



Mobile Updates

NFC scanning capabilities for HxGN EAM Digital Work, updated UI for Mobile Offline and more.



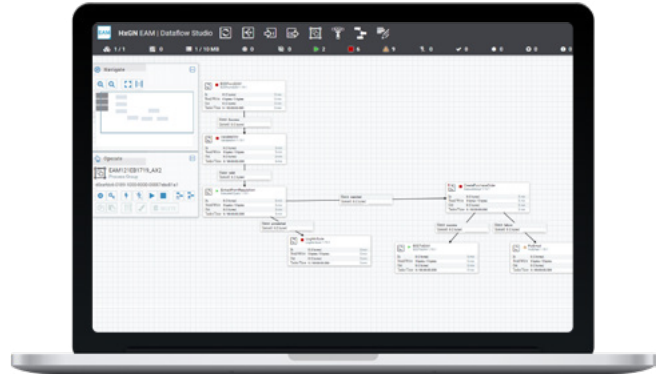
Additional Enhancements

New UI themes, enhanced PM Schedules, custom URL widgets, context-sensitive help, ArcGIS support updates and more.

Key Features and Functionalities Included in HxGN EAM Version 12.1

HxGN EAM Databridge Pro

Powered by Apache NiFi, a leading open-source data flow automation platform, HxGN EAM Databridge Pro provides enhanced data integration capabilities by introducing new features for configuring data pipelines, managing endpoint connections and providing better visibility for efficient troubleshooting and debugging. Available starting January 2024 for HxGN EAM SaaS customers on the Hexagon Cloud, it supports BOD, RESTful API, oData and other interface contracts.



What's the value?

- **Streamlined data integration:** Save time and effort creating custom data pipelines between HxGN EAM and other enterprise applications using the intuitive, no-code graphical interface.
- **Centralized connection management:** Easily manage connections through the endpoint catalog, streamlining integration flow development and ensuring automatic synchronization of changes for smooth operations in HxGN EAM.
- **Increased accessibility and transparency:** Track your data's entire path with the 360 transaction view, gaining detailed insights into each integration step for effective debugging and enhanced visibility.
- **Real-time data processing:** Databridge Pro enhances accuracy, timelines, and completeness by processing data in real time and providing immediate insights for better decisions and proactive actions.

Approval Workflows

The HxGN EAM version 12.1 release introduces a new module called approval workflows. This module is intended to streamline the process of routing records for review. Unlike the previous method of setting up several different status authorization steps, users can now easily configure approval processes using the new approval workflow setup screen within HxGN EAM. This update extends approval capabilities to manage work orders, case management records, requisitions and purchase orders. This module is available for both HxGN EAM SaaS customers on the Hexagon Cloud and on-premises customers, offering three distinct approval flow types:



Sequential

Approvers follow a specific sequence and require approval from all designated approvers



Parallel – All

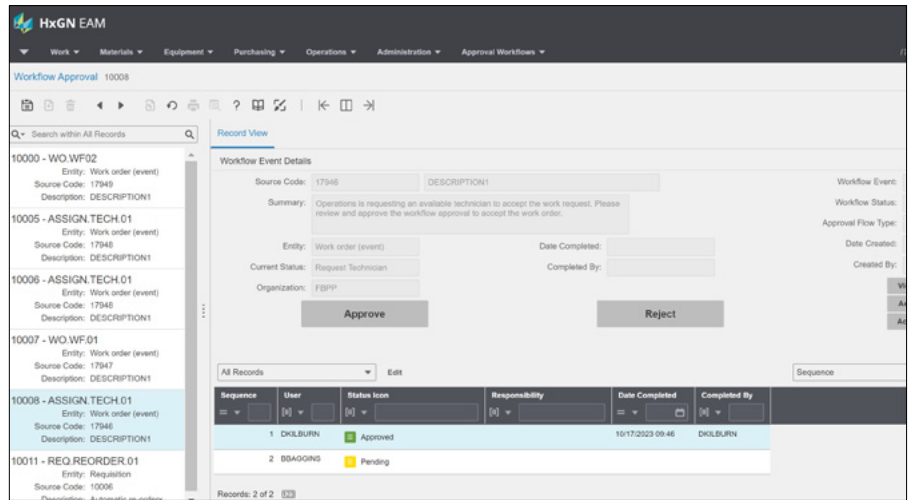
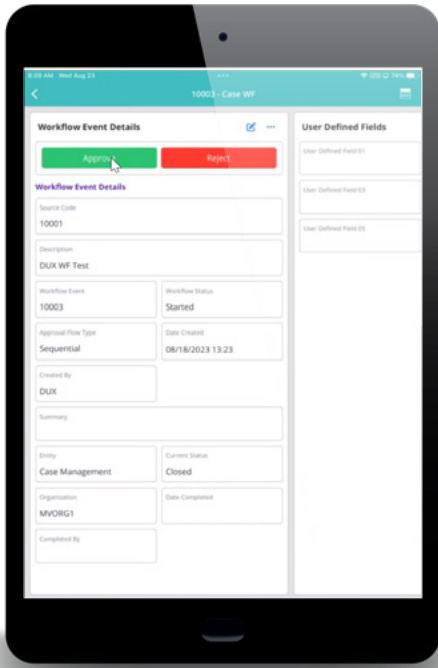
Requires approval from all designated approvers



Parallel – Any

A single approval is sufficient for workflow event approval

The approval workflow screen and tabs have also been made available on the HxGN EAM Digital Work application, allowing users to approve workflows from their mobile devices.



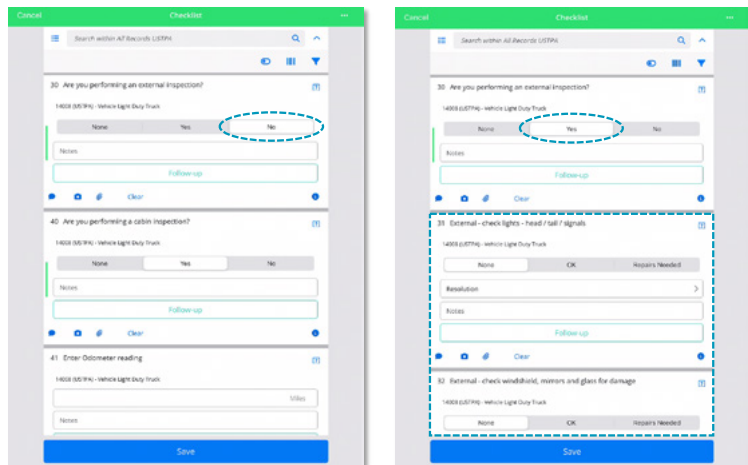
What's the value?

- **Simplified setup:** The new setup screen eliminates complexity, enabling users to establish approval processes seamlessly.
- **Automated control:** Efficiently manage record status triggers and automate approval, enhancing overall control and reducing manual intervention.
- **Enhanced efficiency:** The dedicated workflow approval screen streamlines the user experience, allowing quick identification and action on pending approvals.

Checklist Enhancements

Dynamic Checklists

Checklists are one of the most popular existing features in HxGN EAM. We expanded the already great functionality of checklists by adding dynamic checklist items for both HxGN EAM desktop and mobile applications. Dynamic checklist items are items that remain hidden on the checklist until another item is answered and that answer meets a preset condition. You can now have the questions on your checklist changed dynamically based on the responses to other questions in your list.



What's the value?

- **Relevance:** Display only relevant checklist items based on user responses, streamlining the checklist completion process.
- **Efficiency:** Speed up task completion time by eliminating unnecessary checklist items, enhancing overall efficiency.
- **User-friendly:** Create a more straightforward and user-friendly checklist process by hiding irrelevant items until conditions are met.

Configuring dynamic checklists

To configure dynamic checklist items, two new tabs have been added to the task plan screen:

Dynamic checklist conditions

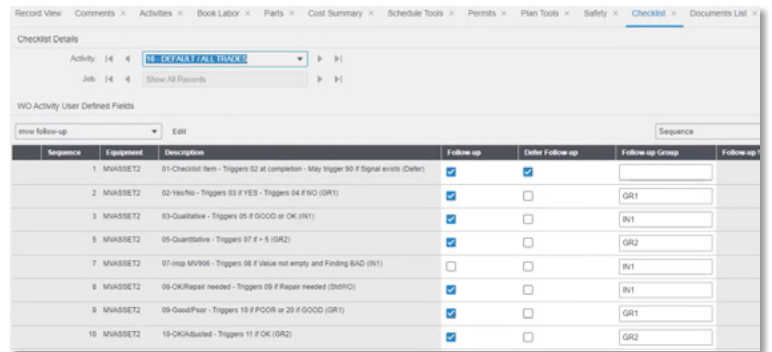
- Easily set up triggers for dynamic checklist items to create a more responsive experience.
- Choose specific checklist items and establish conditions that dictate when additional questions become visible.
- Fine-tune responses, including yes/no options and numeric ranges, to precisely trigger the appearance of designated checklist items.

Dynamic checklist

- Map triggers from the dynamic checklist conditions tab to individual checklist items.
- Connect questions to triggers and establish visibility preferences, allowing for a tailored checklist configuration.

Follow-Up Work Orders

In addition to the dynamic checklists, we've also introduced an enhancement for creating follow-up work orders, offering more flexibility when managing maintenance tasks. Previously, the system would generate a single work order, including all items with the follow-up checkbox selected. With this enhancement, users can now specify whether a checklist item should have its own follow-up, be grouped with others, or be deferred for maintenance. This provides a more tailored approach to handling follow-up tasks, ensuring a more efficient maintenance workflow.



Sequence	Equipment	Description	Follow-up	Defer Follow-up	Follow-up Group	Follow-up
1	MKASSET2	01-Checked Item - Triggers 02 at completion - May trigger 03 if Signal exists (Deliv)	<input checked="" type="checkbox"/>	<input checked="" type="checkbox"/>		
2	MKASSET2	02-Yes/No - Triggers 03 if YES - Triggers 04 if NO (GR1)	<input checked="" type="checkbox"/>	<input type="checkbox"/>	GR1	
3	MKASSET2	03-Qualitative - Triggers 05 if GOOD or OK (IN1)	<input checked="" type="checkbox"/>	<input type="checkbox"/>	IN1	
5	MKASSET2	05-Quantitative - Triggers 07 if > 5 (GR2)	<input checked="" type="checkbox"/>	<input type="checkbox"/>	GR2	
7	MKASSET2	07-mp MY956 - Triggers 08 if Value not empty and Finding BAD (IN1)	<input type="checkbox"/>	<input type="checkbox"/>	IN1	
8	MKASSET2	08-OK/Repair needed - Triggers 09 if Repair needed (SDR10)	<input checked="" type="checkbox"/>	<input type="checkbox"/>	IN1	
9	MKASSET2	09-Good/Poor - Triggers 10 if POOR or 20 if GOOD (GR1)	<input checked="" type="checkbox"/>	<input type="checkbox"/>	GR1	
10	MKASSET2	10-OK/Adjusted - Triggers 11 if OK (GR2)	<input checked="" type="checkbox"/>	<input type="checkbox"/>	GR2	

Follow-up categories

- **Follow-up group:** Users can create follow-up groups specific to their organizational needs and assign checklist items based on how they want to manage follow-up work orders.
- **Standard work order:** Create an individual work order for the checklist item based on the standard work order.
- **Defer follow-up:** Create a deferred maintenance activity instead of a follow-up work order.

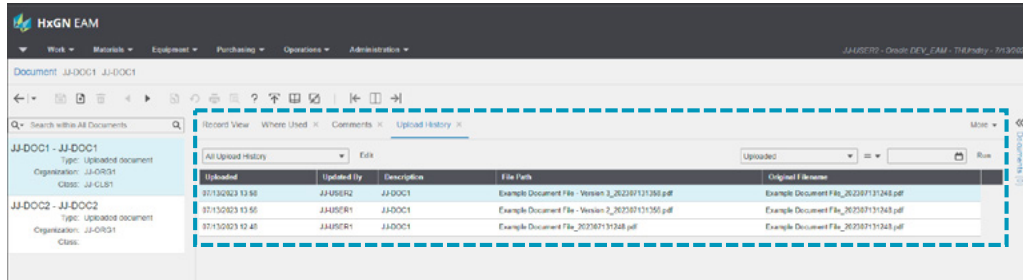
What's the value?

- **Enhanced efficiency:** The ability to specify follow-up categories streamlines the maintenance process, reducing the time and effort required to address tasks by providing a clear and organized structure.
- **Customized workflows:** Users can tailor follow-up workflows to match specific requirements, ensuring that maintenance processes align seamlessly with the unique needs of their organization.

Document Enhancements

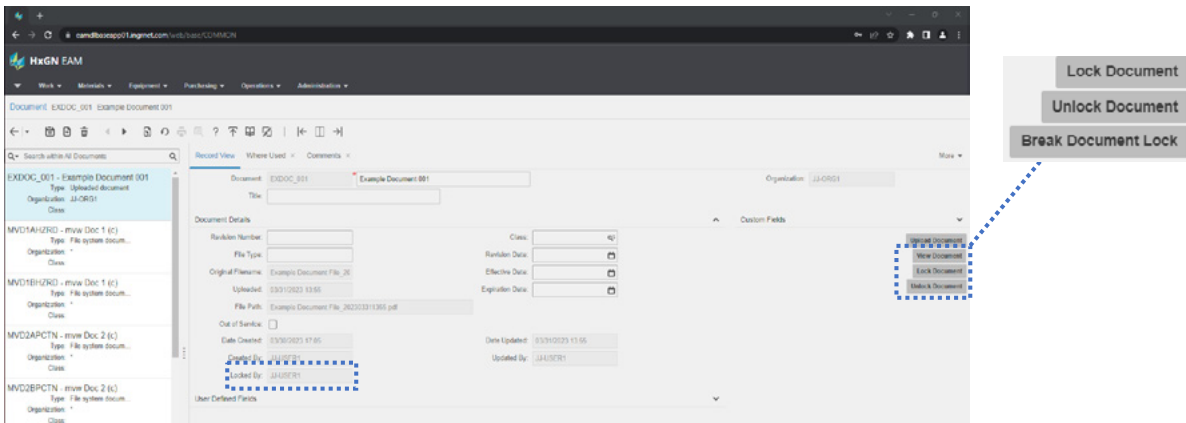
Upload History Tab

We've expanded document capabilities by introducing the upload history tab. Unlike the previous version, users can now access a historical record of document file versions, including snapshots of attributes at the time of upload. This update offers a straightforward solution for better version management and allows users to view past versions, promoting improved document visibility and simplified file management.



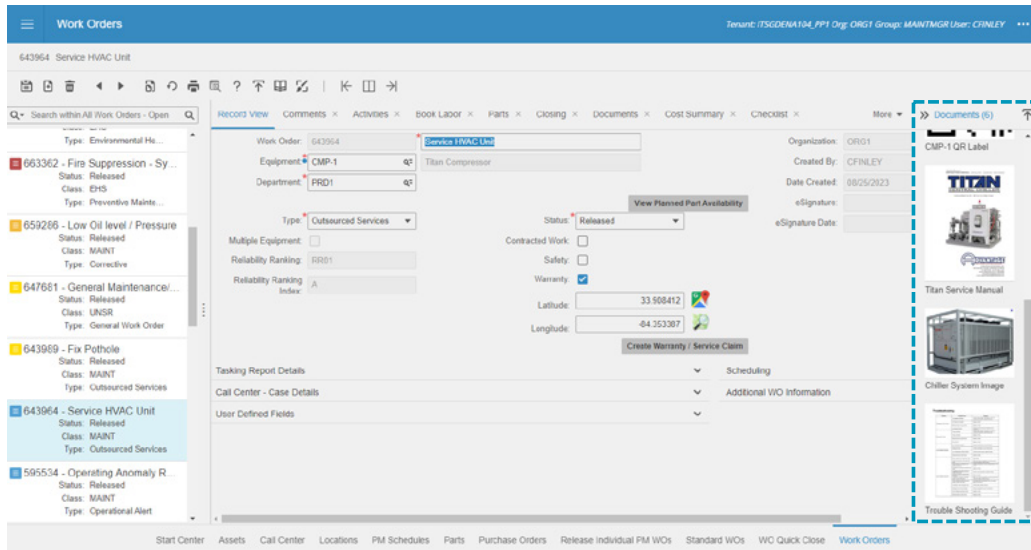
Document Locking

With this new feature, when a user locks a file, any additional uploads are restricted to only that user. This prevents accidental edits and shows who owns the locked document. This user can release the lock, allowing updates to be made to the document. Document locking ensures enhanced security, safeguarding your document files from unwanted modifications.



Preview Sidebar

The preview sidebar provides quick and easy access to associated documents without navigating to the documents tab. The collapsible side panel displays thumbnails for supported file types, allowing users to seamlessly view documents within the record view. Even when collapsed, it provides a document count for the selected record, offering improved visibility.



Checklist Item Documents

If a document is attached to a checklist item on a work order, that document will now also show up in the document tab of the work order. Additionally, if a document is attached to a checklist item and a follow-up work order is created, that document will automatically show up on the documents tab of the follow-up work order.

Mobile Updates

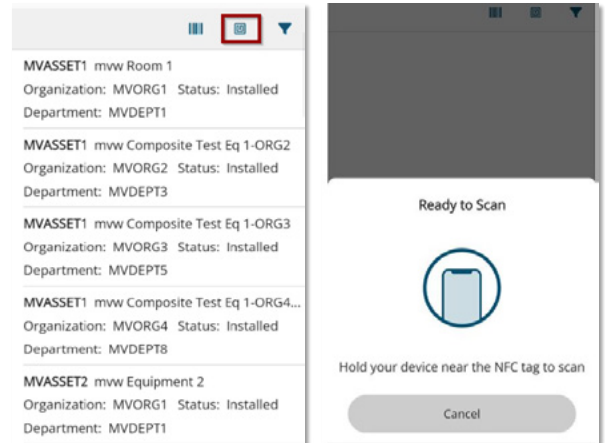
HxGN EAM Digital Work

Advanced Mobile Access

HxGN EAM Advanced Mobile users can now access HxGN EAM Mobile Offline, offering comprehensive features while disconnected. This equips users with further capabilities of HxGN EAM desktop on their mobile devices for enhanced flexibility and productivity.

NFC Scanning Capability

The latest update introduces a powerful NFC tag-scanning feature. Near-field communication (NFC) technology allows two devices to communicate wirelessly using a small, embedded tag. This feature allows users to replace traditional barcode and QR code scanning with the convenience of using mobile devices to transfer data. Activating the NFC scanning is as easy as clicking a new icon on the interface, and it's fully compatible with modern iPhones and Androids featuring NFC capabilities. Users can customize an NFC tag with information like asset ID, or use an existing NFC tag unique ID if it has one. By associating these NFC tag IDs with assets through a designated field, users can efficiently scan tags with their mobile devices to instantly access asset information, eliminating the need for manual searches or barcode scanning.



What's the value?

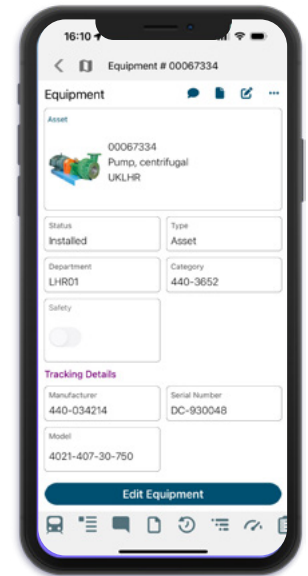
- **More durable:** NFC tags can withstand use on equipment that gets dirty or experiences heavy use, offering longevity compared to barcodes and QR codes which can degrade more quickly.
- **Streamlined workflow:** Modern mobile devices can easily scan NFC tags to retrieve asset information promptly.
- **Improved efficiency:** Eliminates the need for time-consuming manual searches and barcode scanning.

HxGN EAM Mobile Offline

HxGN EAM Mobile Offline, formerly known as the Transit application, is the ultimate solution for technicians in the field, enabling work execution and equipment inspections even in remote areas. Our disconnected application allows users to download necessary data, complete assigned work orders and inspect equipment with precision, regardless of network connectivity.

Key enhancements include:

- **New name:** The Transit application has been officially rebranded as HxGN EAM Mobile Offline, emphasizing its capabilities as a disconnected application.
- **Harmonized UI with HxGN EAM Digital Work:** The EAM Mobile Offline user interface has been updated to align with Digital Work, ensuring a consistent and user-friendly experience when switching between applications.
- **Deep link integration:** The introduction of deep link functionality (introduced in 12.0.1) enables transitions between HxGN EAM's mobile applications. Users are prompted to switch to EAM Mobile Offline when connectivity is lost, ensuring uninterrupted workflow.

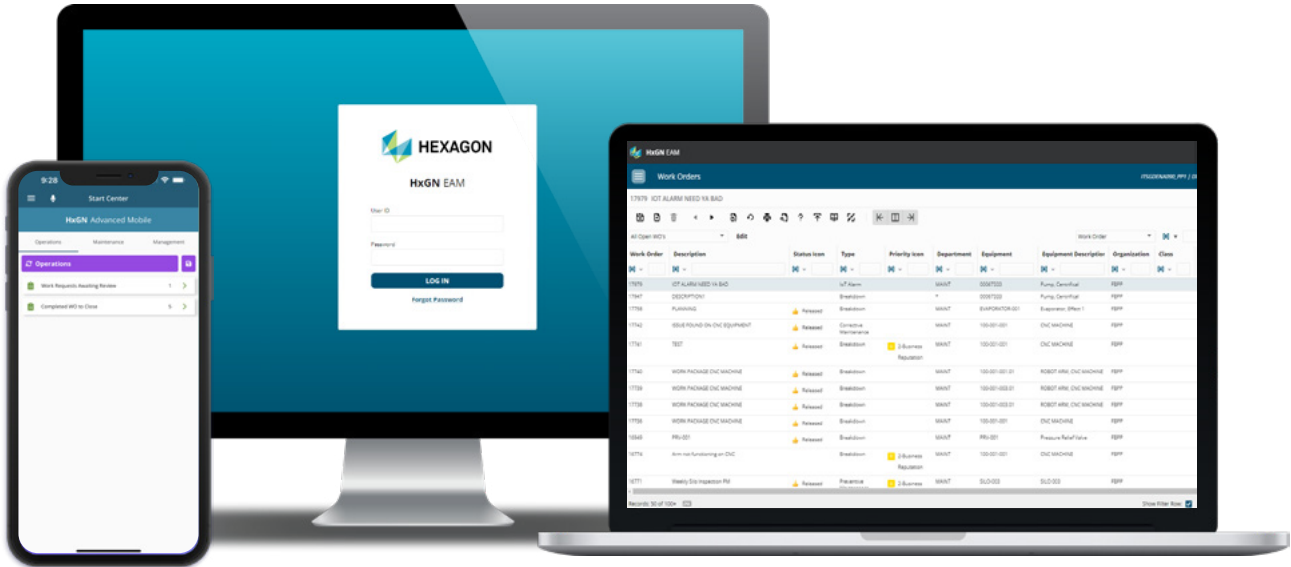


Additional Enhancements

The HxGN EAM version 12.1 release also includes other unique functionality that deserves highlighting, including the following:

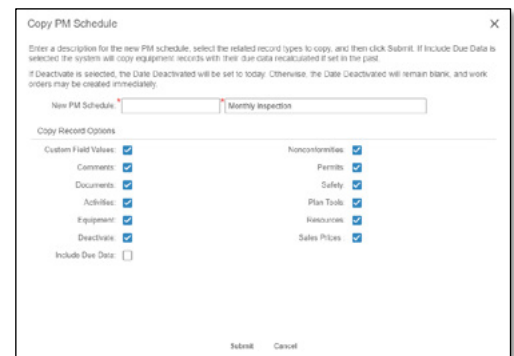
New UI Themes

Two new Hexagon color palettes are now available for HxGN EAM desktop, Digital Work, and EAM Mobile Offline applications: Theme-hex and Theme-hex-dark.



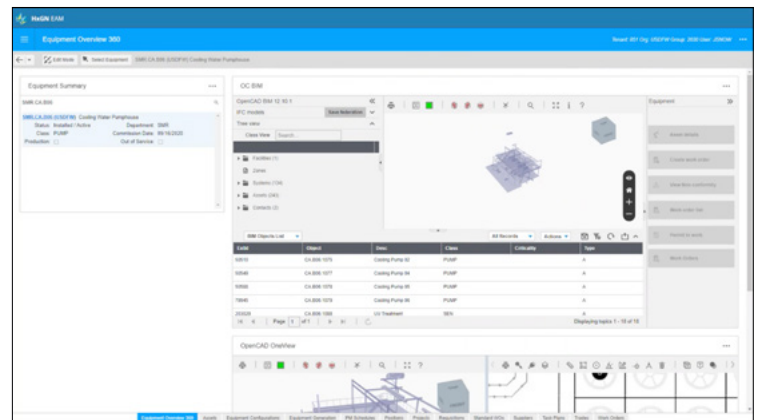
Enhanced Preventative Maintenance (PM) Schedules

The new copy PM schedule button enables users to efficiently copy selected items from an existing PM schedule to create a new PM Schedule for a set of equipment. Associated equipment can be copied with or without the current due date, or with the deactivated flag set. Additionally, the new deactivate all equipment option allows users to easily stop a PM Schedule for all related equipment without losing the attached equipment.



Custom URL Widget for Equipment Overview 360

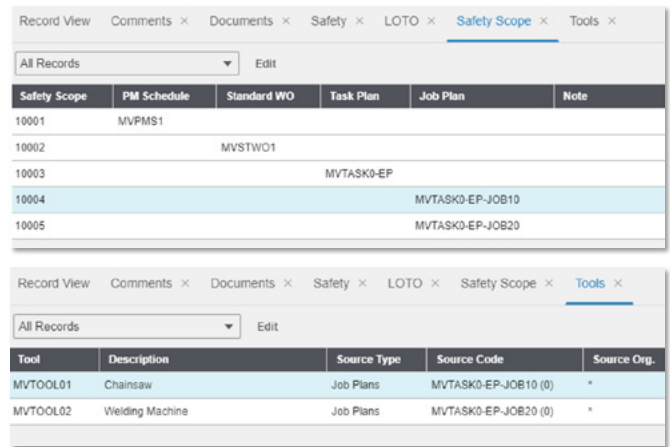
The newly added custom URL widget for the equipment overview 360 screen enables users to integrate external information into their dashboards by selecting any URL configured as a custom tab of type HTML. For example, users can now access OpenCAD drawings or BIM models, providing a straightforward means to view and analyze assets. This feature simplifies the process of accessing critical information, enhancing the system's overall usability and expanding the capabilities of the equipment overview 360 dashboard.



Permit to Work

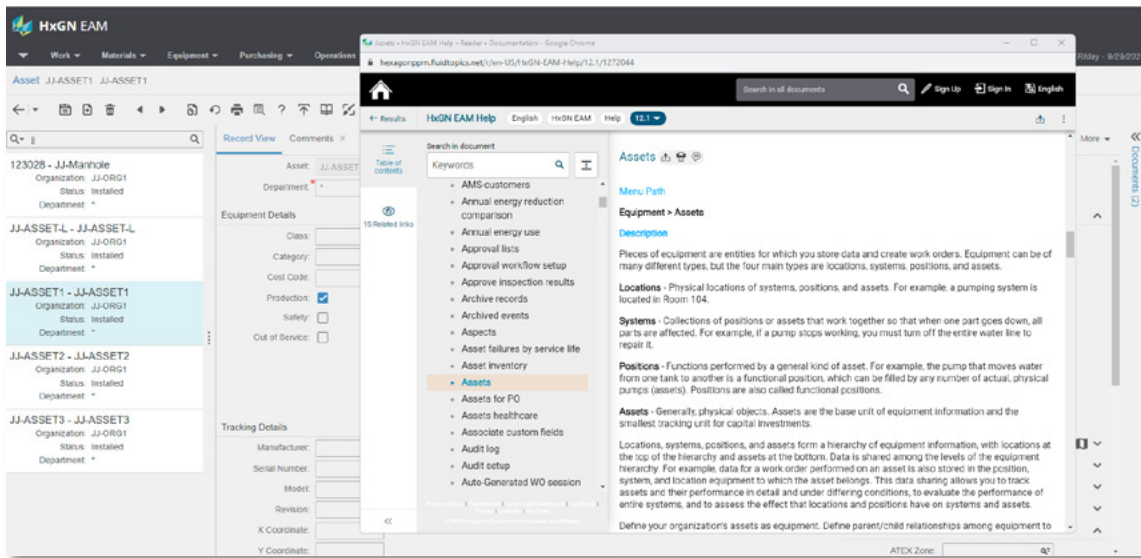
Two new tabs have been added to the permit to work screen to allow field workers and supervisors to plan and execute tasks more quickly and safely.

- **Safety scope tab:** Identify and incorporate work order content like scheduled maintenance, standard work orders, task plans or job plans to a permit to work.
- **Tools tab:** Select and add necessary tools for a work order or permit to work, as well as any related hazards or precautions to the safety tab.



Updated Help URL for Context-Sensitive Help

In response to user feedback, we've updated the help URL to display context-sensitive help resources. Now when a user clicks the help icon from the toolbar, they are directed to the specific section of our comprehensive help document related to their concern, rather than just the top of the page. For example, if a user clicks the help button while on the asset screen, the system will now take them to the assets section of the HxGN EAM help page for version 12.1.



ArcGIS Support Updates

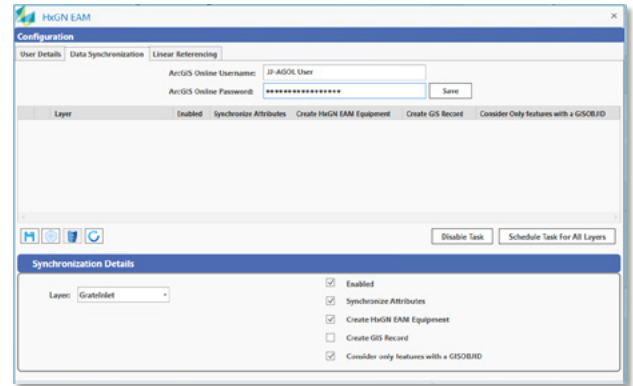
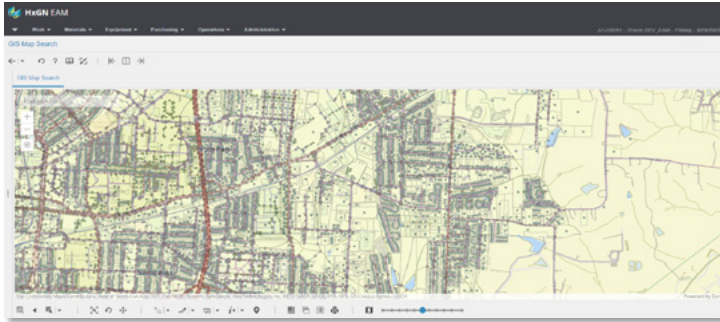
HxGN EAM's geographic information system (GIS) components now support ArcGIS Enterprise 11.1 across desktop and mobile applications and the ArcGIS Pro Add-In. In anticipation of ESRI's retirement of ArcGIS API for JavaScript 3.x in July 2024, HxGN EAM has been upgraded to support ArcGIS Maps SDK for JavaScript 4.x, meaning users won't need to make any significant changes to the setup or configuration of map-based screens.

Incorporating ArcGIS Online's map layer features, HxGN EAM now allows users to visualize and enable these features seamlessly across various GIS components, including GIS search, GIS work order dispatch, map-based pop-ups, lookups, drop-downs and mobile applications.

The HxGN EAM add-in for ArcGIS Pro has undergone enhancements, empowering users to export/import predefined field mappings between GIS and HxGN EAM equipment attributes efficiently. This streamlines the configuration of mapped fields, which is particularly beneficial in scenarios with repeated use of similar field names across multiple GIS layers.

Improvements in data synchronization with ArcGIS enhance efficiency by consolidating all map layers into a single synchronization task, replacing the previous approach of individual tasks for each layer.

Moreover, the scheduled synchronization process now extends its support to secured ArcGIS Online-hosted feature layers. This ensures regular and secure data updates from protected layers in ArcGIS Online within HxGN EAM.



From enhanced data integration to streamlined workflows and mobile innovations, the latest release empowers users with more efficient operations, better decision-making and enhanced overall productivity. To dive deeper into the innovative capabilities of HxGN EAM version 12.1, we invite you to watch our recent **“What’s New in HxGN EAM 12.1”** webinar for a more in-depth look at these new enhancements.

About Hexagon

Hexagon is the global leader in digital reality solutions, combining sensor, software and autonomous technologies. We are putting data to work to boost efficiency, productivity, quality and safety across industrial, manufacturing, infrastructure, public sector, and mobility applications.

Hexagon’s Asset Lifecycle Intelligence division helps clients design, construct, and operate more profitable, safe, and sustainable industrial facilities. We empower customers to unlock data, accelerate industrial project modernization and digital maturity, increase productivity, and move the sustainability needle.

Our technologies help produce actionable insights that enable better decision-making and intelligence across the asset lifecycle of industrial projects, leading to improvements in safety, quality, efficiency, and productivity, which contribute to Economic and Environmental Sustainability.

Hexagon (Nasdaq Stockholm: HEXA B) has approximately 24,000 employees in 50 countries and net sales of approximately 5.5bn USD. Learn more at [hexagon.com](https://www.hexagon.com) and follow us [@HexagonAB](https://twitter.com/HexagonAB).

About Progressive

Progressive TSL are a technology company that supports asset-intensive industries across the globe looking to enhance their finance, supply chain, asset management, and ESG systems and processes.

Progressive are Hexagon channel partners, with many years experience of optimising HxGN EAM to meet the needs of the industries they work with. Progressive’s team of experienced consultants, overlay the HxGN EAM platform with Progressive’s industry-specific best-practice implementation framework to address the key drivers and processes necessary to maximise performance of their customer’s assets.

To learn more please visit www.progressive-tsl.com.